



Standard Product Features

- Full color LED indicators including pure white
- Improved thermal dissipation
- Standard and custom legends (no mins, no set up fees)
- Significant power reductions, PKU MS consumes with all LED's active 107mA @ 12V
- Simplified CAN messaging using CANconnect software to control multiple LEDs within single message
- Supply Voltage 12-24V
- Brighter LED's
- LED backlit icons
- Relegendable Buttons
- Multicolor indicator rings
- Sealed IP68
- Vertical or horizontal mount
- CRM or Designer, ECS firmware options

Improved Product Features

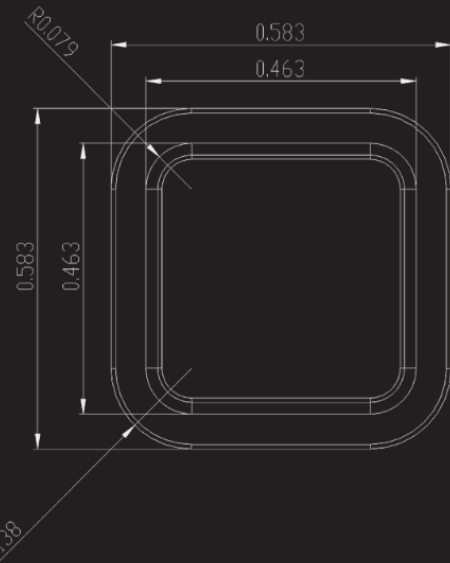
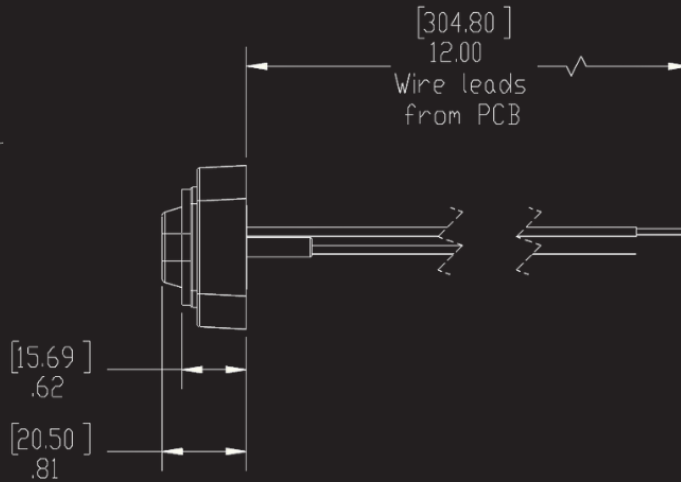
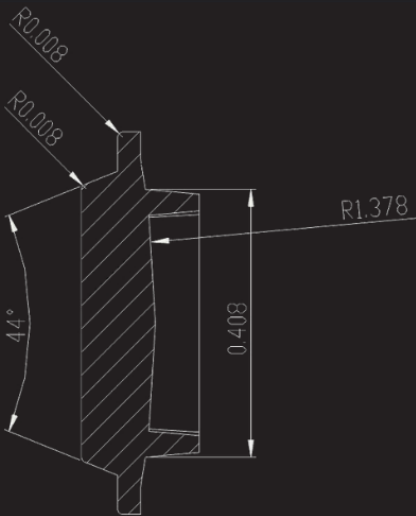
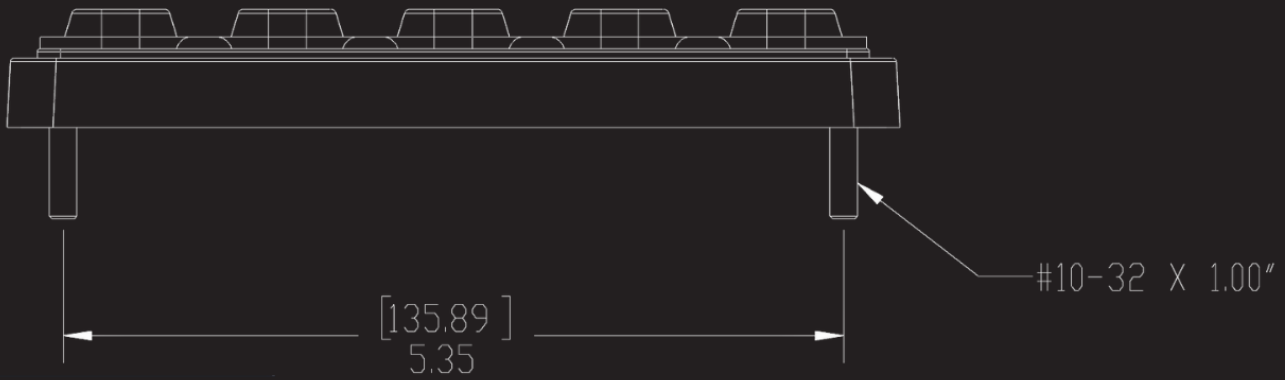
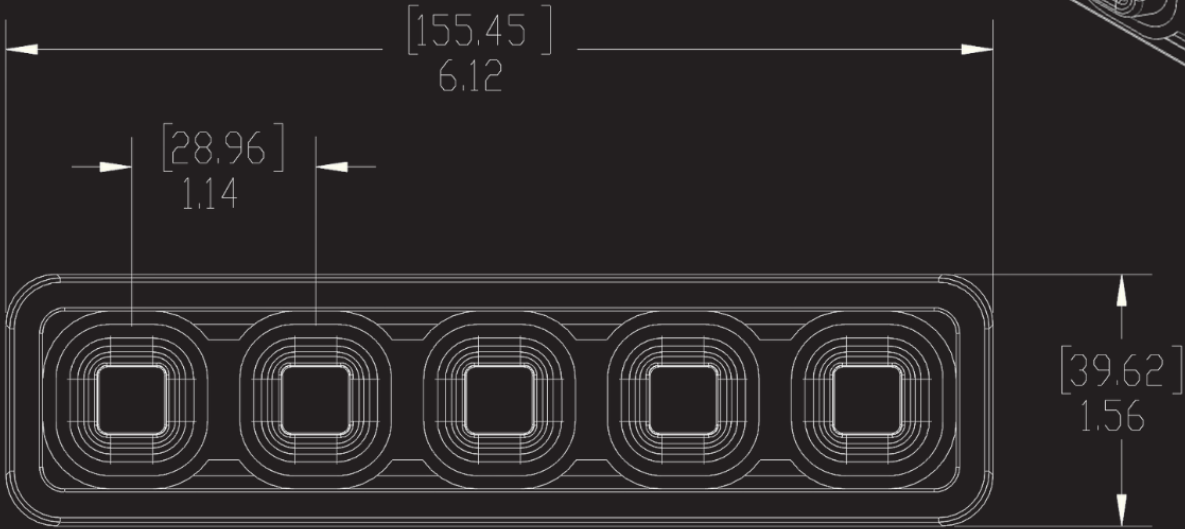
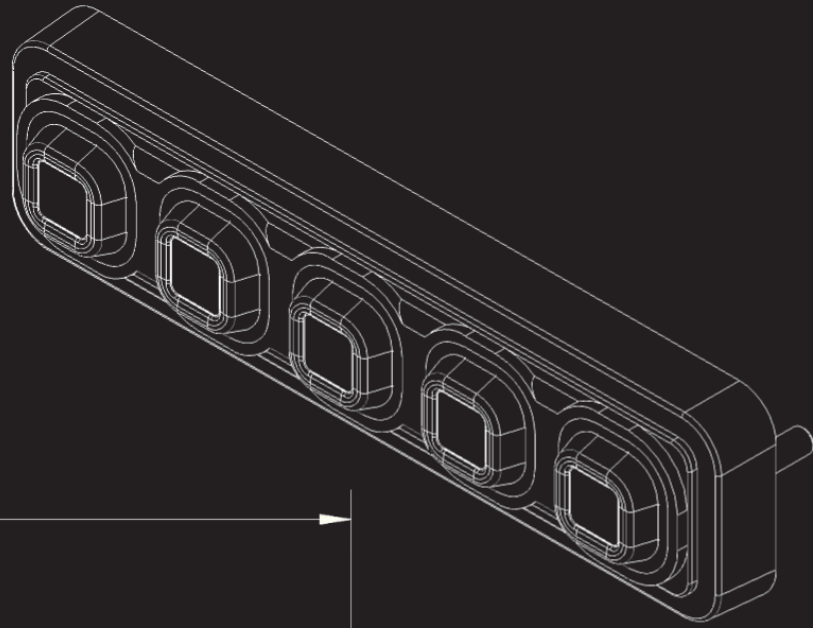
with Designer Firmware

- 256 step brightness control for each color
- New LED visual effects (blink, pulse, spin, ripple)
- On/Off, momentary, toggle, scroll/step functions programmable for each key
- Autonomous operation (key press causes LED to change state without feedback from external device)
- NMEA200 bus compliant (support ISO requests, address claim, binary status 127501 and binary control 127502 messages)

Protocols & Accessories

- CAN Open
- J1939
- NMEA2000
- Free Software Utility
- Accessories Catalog
- Connector options include: Deutsch, and more

POWERKEY ULTIMATE 1500MS



SECTION A-A